

COMMUNICATIONS UPDATE

WWW.PCAFAMILIES.ORG.AU



QUICK LINKS

Click & Connect
Wed 8/2/23

Share & Connect
Thurs 2/2/23



News - Champions of Education

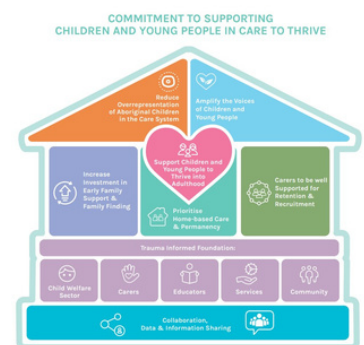
The Centre for Excellence in Child and Family Welfare (CFECFW) have released a training program for schools, teachers and educators. The first module highlights The Out of Home Care System in Victoria while the second module explains the experiences of trauma and its impact on engagement in education, how to recognise trauma behaviours and how to implement a trauma informed approach. Share it with your children's teachers and schools or watch it yourself to learn some more! The CFECFW will provide recognition of completion of the course so it all goes towards teachers completing professional training online. Find out more [here](#).



News - National Permanency

PCA Families has signed its support to all 8 recommendations in the Adopt Change National Permanency Conference 2022 Recommendations released 30 November 2022. Find them [here](#).

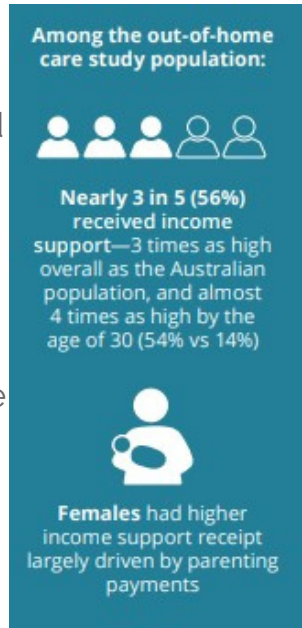
The recommendations are summarised in the pictorial and follows a National Commitment Plan for Children and Young People to Thrive. This includes a commitment to practices that reduce overrepresentation of Aboriginal children in the care system, reduce time in a "system" so that children can be raised in family homes and a shift to young people graduating to independence as distinct from leaving care. Funding appropriate training and education, simple adoption and building trauma informed foundations were also highlighted. An important step!



Source: Adopt Change National Recommendations Paper 30 November 2022

News - Income Support in Care

Young people who have been in out of home care (kinship and other) face greater vulnerability and a higher risk of experiencing poor outcomes in key wellbeing areas, reflecting disruptions that led to their placement in care and wider exposure to disadvantage and trauma. Income support receipt for young people transitioning from out of home care 2022 key findings show that young people who have lived experience of out of home care are 13 times more likely to receive crisis support payments, than their peers, and that teenagers from out of home care are considerably more likely to receive parenting payments than their peers. What does that all mean? It may be that complex circumstances necessitate ongoing support. However, it could also mean that we need to do additional work towards encouraging independence within a supportive family structure. Find out more about the study [here](#). Raising Children have some guidelines [here](#) on encouraging independence. Things like decision making and working through conflict are highlighted as constructive steps towards independence.



Source AIHW Infocus Oct 22

News - VAGO

The Victorian Auditor General's Office have released their 2022 report on Kinship Care, with the purpose of answering this question. Does DFFH support timely, stable and quality placements for children and young people through the new kinship care model? A total of 12 recommendations were made to DFFH, including 6 about identifying kinship networks early, one about completing mandatory assessments, 2 about support for carers and 3 about monitoring and reporting on the new model. Find out more [here](#).

News - Solidarity Through Volunteering

Caring for children is a voluntary role that we all have a shared interest in. As we celebrate International Volunteering Day on December 5 we reflect on our parents and carers who continue to make the best choices for children and advocate on their behalf.



This all requires a big commitment and a lot of unseen work that is often unrecognised and sometimes undervalued. We want to acknowledge that work today. We see you. We see your efforts, your work, your pain, your exhaustion, your joy and the amazing leaps forward as the years progress. We thank you for every ounce of energy and time you pour into your children's cup. While your cup may be less than half full at times, we know you are always striving for your children to thrive. **Heartfelt thank you, respect and appreciation for you.**

To find out more about International Volunteers Day and the importance of shining a light on volunteering see [here](#).

News - Disability or Disabled?

Some people are 'disabled'. Others 'live with' or 'have a disability'. While some may describe a person in either way, it comes down to what is important to the individual in how they see themselves. That's the difference between identity-first and person-first language: there is no universal right or wrong. To find out more see [here](#).



News - Program Leader Role

Join a team of highly skilled, motivated and compassionate professionals at PCA Families who are currently looking for an outstanding Program Leader!

PURPOSE: Day to day supervision and support for a small team operating the Flexible Funding Program. The program may cover partial, full or ongoing costs not met by the carer allowance or other funding sources.

REQUIRED: social work, psychology, nursing or equivalent qualification and experience in providing community-based or home-based service delivery using evidence-informed trauma informed approaches, practices and models, and an understanding of Victoria's child and family services sector funding sources. Find out more [here](#) or via Ethical Jobs [here](#) or Pro Bono [here](#).

Permanent
Care and
Adoptive
Families



"Improving the lived experience of young people"

DFFH Flexible Funding

If your child or young person is on a Permanent Care Order or you receive the DFFH Care Allowance and they have a Family Court Order or Adoption Order, they are entitled to DFFH Flexible Funding to meet the costs of goods and services they need not covered by the care allowance, or another funding source (eg Medicare, NDIS). Flexible funds can be used for therapeutic, educational or medical services, build skills interest or attachments, support birth family contact and cultural identity, respite, medication, vehicle modifications. For more details on what the funds can be used for see [here](#). Claims should be more than \$100 per invoice and generally paid by PCA Families directly to the supplier. To ensure funds are distributed fairly and equitably and are appropriate and safe for your child, we ask for supporting documentation that services are trauma informed and that both goods and services are recommended by a professional who knows your child or young person.

Subscribe to Facebook, LinkedIn or
Youtube by clicking these links



PCA Families, Level 4, 247-251 Flinders Lane, Melbourne 3000
info@pcafamilies.org.au www.pcafamilies.org.au 03 9020 1833

Want to change how you receive these emails?
You can update your preferences or unsubscribe from this list.